



PIGEON POST

OCTOBER

- Kindy 2019 Transition to School:
 - 22-26 Oct - Group 1
 - 29 Oct-2 Nov - Group 2
- Fri 26 ~ Halloween Disco

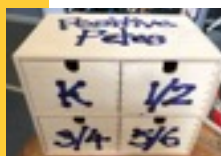
NOVEMBER

- Wed 7 ~ P&C meeting ~ 7pm
- Sun 11 ~ Remembrance Day
- Wed 14 ~ Year 6 Balmain Bazaar
- Sun 18 ~ Belle Property BALMAIN FUN RUN
- Wed 21 ~ Kindy Orientation

DECEMBER

- Wed 5 ~ P&C meeting ~ 7pm
- Wed 12 ~ Year 6 Day Out
- Mon 17 ~ Yr 6 Graduation
- Tues 18 ~ Celebration of Learning
- Wed 19 ~ Last day of school

Positive Pete Soars...



Our PB4L mascot, **Positive Pete**, is spreading his wings and delivering positivity everywhere!

We've had to get a bigger box to fit all the Positive Petes coming in, with an individual compartment for each stage.

This term, the weekly prize will be treat from **Gelatissimo!** A lucky student from each stage will be drawn every Wednesday!

Congratulations to the following students this week:

- Early Stage One - **Kai McB** K Crabs (out of 73 PPs)
- Stage One - **Lauren B** 1/2 Galapagos (out of 59 PPs)
- Stage Two - **Joshua C** 3/4 Flameback (out of 197 PPs)
- Stage Three - **Lucius S** 5/6 Coelacanth (out of 185 PPs)

Congratulations to all and best of luck for next week's draw!

Maria Lambos ~ Principal



School Calendar

BPS event		P&C event	TERM 4 @ BPS				
WEEK		MONDAY	TUESDAY	WEDNESDAY	THURSDAY	FRIDAY	SAT/SUN
2	KINDY TRANSITION	22 Oct	23 Oct	24 Oct	25 Oct	26 Oct HALLOWEEN DISCO Canteen	27 Oct Nicholson St Halloween Festival
3	KINDY TRANSITION	29 Oct	30 Oct	31 Oct State Athletics - Homebush	1 Nov State Athletics - Homebush	2 Nov Canteen	
4		5 Nov	6 Nov	7 Nov OC Orientation 7pm - P&C meeting	8 Nov	9 Nov Canteen	Sun 11 Nov Remembrance Day
5		12 Nov	13 Nov	14 Nov Year 6's Balmain Bazaar	15 Nov	16 Nov Canteen	Sun 18 Nov Belle Property BALMAIN FUN RUN
6		19 Nov	20 Nov	21 Nov Kindy 2019 Orientation	22 Nov	23 Nov Canteen	
7		26 Nov	27 Nov	28 Nov	29 Nov	30 Nov Canteen	
8		3 Dec	4 Dec	5 Dec 7pm - P&C meeting	6 Dec	7 Dec Canteen	
9		10 Dec	11 Dec	12 Dec Year 6 Day Out	13 Dec	14 Dec Canteen Party	
10		17 Dec Year 6 Graduation	18 Dec Celebration of Learning	19 Dec Last day of school			

THE BALMAIN WAY ...



We are a **community** of:

SAFE, RESPECTFUL and
RESPONSIBLE learners.

SAFE

Listen and follow instructions
Be in the right place at the right time
Keep hands and feet to yourself

RESPECTFUL

Show pride in your school
Allow others and yourself to learn
Use your best manners at all times

RESPONSIBLE

Accept opportunities and challenges
Be accountable for your actions and choices
Be punctual and prepared

VOLUNTEER FOR THE BELLE PROPERTY BALMAIN FUN RUN NOW



Register for the Belle Property Balmain Fun Run here

Did you know that 10 years ago the **Belle Property Balmain Fun Run** was started by the Balmain PS P&C Association, when only a few hundred runners worked the hills of Callan Park and their times were recorded using stop watches and scraps of paper!

Today the Run is regarded as amongst the best and most professionally organised grass roots running events in the country....and it's only this good because of **YOU!**



We are actively calling out for volunteers NOW to join the team for a wide variety of roles.

How to volunteer:

1. Go to [**balmainfunrun.com.au/volunteers**](http://balmainfunrun.com.au/volunteers)
2. Click on the **REGISTER** button
3. Nominate your preferred role & hit continue
4. Enter your contact details so we can send you further information about what you will be doing
5. DONE!

FAQ:

1. I want to run. Can I volunteer and run too?
YES YOU CAN!!! Decide which run you want to do, then choose a job that fits around it! Timeframes are indicated next to job.
2. I would rather let you know directly that I would like to volunteer. Can I do that?
YES YOU CAN!! Email our Volunteer Coordinator: Kylie Mildren at Kylie [**kylie@mildrenevents.com.au**](mailto:kylie@mildrenevents.com.au)

If you would like to volunteer for something not listed on the website, or have more questions, please email Kylie at [kylie@mildrenevents.com.au**](mailto:kylie@mildrenevents.com.au) .**

Blue Planet Class Artworks Tea Towels

Class Artwork Tea Towels are now available on Flexischools!

Did you miss out on purchasing your child's class artwork? Is there an artwork from another class that you'd like to purchase? Perhaps you'd like the entire set! Perfect gift idea...

100% linen tea towels with each class artwork printed on it's own tea towel.

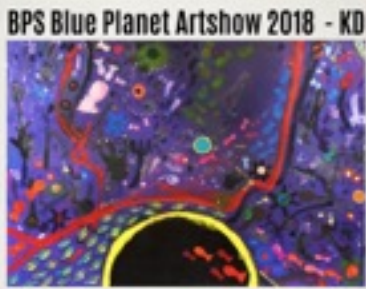
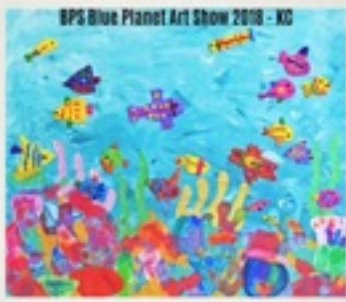
Samples can be viewed in the office foyer. Each class artwork will be available.

1 for \$13, 3 for \$35 or 15 for \$165.

Tea towels will be delivered to your child's class next term.

www.flexischools.com.au

Place your order by 9 November.



BPS Blue Planet Art Show 2018 - KP



BPS Blue Planet Art Show 2018 - 1/2B



BPS Blue Planet Art Show 2018 - 1/2M



BPS Blue Planet Art Show 2018 - 1/2S



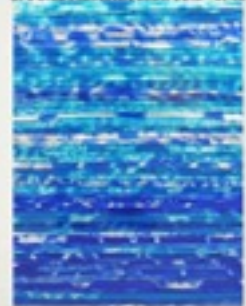
BPS Blue Planet Art Show 2018 - 1/2G



BPS Blue Planet Art Show 2018 - 3/4F



BPS Blue Planet Art Show 2018 - 3/4K



BPS Blue Planet Art Show 2018 - 5/6Y



BPS Blue Planet Art Show 2018 - 5/6W



BPS Blue Planet Art Show 2018 - 5/6L



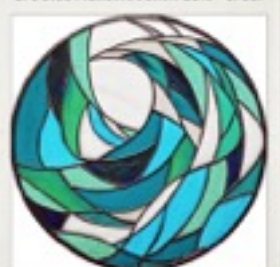
BPS Blue Planet Art Show 2018 - 5/6G



BPS Blue Planet Art Show 2018 - 3/4T



BPS Blue Planet Art Show 2018 - 5/6S7



Congratulations

...to Ms Annabel Yau, teacher of 5/6 Yabby; she was the successful candidate, when a specially-formed panel (consisting of a parent rep, teacher rep and myself) held interviews at the end of last term. We were impressed with all the candidates who made it to interview, as they were of such high-calibre.

We look forward to officially welcoming Annabel in an official capacity at the beginning of 2019!



Accreditation

NESA (NSW Education Standards Authority) is the governing body that ensures only quality teachers are educators across all NSW school systems.

Congratulations to both Miss Angela Curry and Ms Sharlene Tauia, who have both been accredited at the Proficient Teacher level.

Professional Learning - Term 4

We continue to partake in professional learning that we feel will make a difference to the education of your children. Some of our learning in Term 4 includes:

- 16 Oct - Leading the implementation of the new Best Start assessment - Ms Davis, Miss Cooper
- 16-19 Oct - ProjectNEST Conference - Newcastle - Miss Weston, Mr Baumann, Ms Ferguson, Mrs Lambos - Rigorous, Engaging, Authentic Learning (REAL) Projects - primary and secondary schools
- 24 Oct - twilight session (3:15-6:15) - Rock & Water - all staff
- 30 Oct - Eddie Woo Masterclass - Miss Weston
- 26-27 Nov - Visible Learning - Miss Cooper, Ms Ferguson, Miss Karstrom, Ms Tauia, Miss Weaver, Miss Weston

belle
PROPERTY **2018**



**BALMAIN
FUN RUN**
SUN 18TH NOV



*Proudly
supporting*

BPS



**THE
RUN BEYOND
PROJECT**



**2018
Running Shirt**
Lightweight Vaporlite
Fabric
(120-125gsm)



CAPS \$15

**ORDER NOW AT
BALMAINFUNRUN.COM.AU**

2018 RUNNING SHIRT
\$30 KIDS
\$45 ADULTS

Cake Stall

Last Saturday we held a cake stall to help fund our Year 6 graduation. We couldn't have been happier when we saw all the amazing cakes and goodies that all the great Year 6 parents had brought to the stall. There was everything from brownies to cupcakes, cheesecake slice and cookies galore! We were very lucky to have a beautiful sunny day and managed to sell everything! We raised over \$1000 to go towards our graduation.

Thank you to Tania, Marea, Andrea, Alexis, Mia, Tiffany, Belinda, Linda, Kate, Sheridan, Fiona, Katrina, Ly, April and Nhan for helping the day run as smooth as possible and also the year 6 kids and siblings who did an awesome job helping out the parents. Thank you also to all the Year 6 families that baked something for us to sell. All in all it was a great day in which we raised lots of money and most importantly was lots of fun!

By Henry Daniels



Anaphylaxis

We have a number of students at Balmain Public School that have severe allergies/anaphylactic reactions to different foods; in particular, nuts.

Anaphylaxis is a potentially life threatening, severe allergic reaction and should always be treated as a medical emergency. Anaphylaxis occurs after exposure to an allergen (usually to foods, insects or medicines), to which a person is allergic. Not all people with allergies are at risk of anaphylaxis.

We ask, on behalf of our students who are at risk, that you please refrain from supplying your child/ren with nuts or nut products in their lunch boxes, or for school activities, such as birthday cakes, end-of-term/year parties or cupcakes for fundraising.

All parents/carers can encourage their child to avoid sharing or trading food and eating utensils. Encouraging children to wash their hands after eating may also be helpful to avoid mild allergy symptoms such as a skin rash. It is also helpful to tell children to get help from a teacher or other adult if another child looks unwell, even if they do not know what is wrong with them. Older children can be taught about food allergies and anaphylaxis at appropriate times and of ways they can support their peers to avoid risk foods and to be safe. Our staff will reiterate this.

We thank you in advance for your understanding and assistance in supporting these children at risk of anaphylactic reactions.

Kind regards

Maria Lambos~Principal

HALLOWEEN DISCO: FRIDAY, 26TH OCTOBER 2018

DISCO ENTRY & 'MEAL DEAL' OF PIZZA & CORDIAL: \$10 PER CHILD

VIA FLEXISCHOOLS.COM.AU

ACCOMPANYING ADULT: FREE OR \$5 FOR PIZZA

ONLY LIMITED TICKETS WILL BE AVAILABLE ON THE NIGHT SO PLEASE BOOK AHEAD!

PLEASE PRINT & BRING YOUR TICKETS FOR ENTRY



K - YR2 DANCE: 6:00 - 6:45 PM | PIZZA IS SERVED: 6:45 - 7:00 PM

K - YR2, YR3 - YR6 & ADULT 'BEST DRESSED' COMPETITIONS: 7:00 - 7:15 PM | YR3 - YR6 DANCE: 7:15 - 8:00 PM

THIS IS A P&C EVENT: ALL CHILDREN MUST BE ACCOMPANIED BY A PARENT / CARER AT ALL TIMES.



BPS CANTEEN



www.flexischools.com.au

BPS Parents & Citizens Association

**DON'T FORGET TO GET YOUR ORDERS IN
BY THURSDAY 9AM!**

TERM 4 MENU



Oct 26

Dumplings



Nov 23

Pork & Rice



Nov 2

Chicken Napoletana

Cafe Berlin

Nov 30

Penne Napoletana

Cafe Berlin

Nov 9

Beef & Rice



Dec 7

Butter Chicken

maharajas

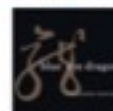
Nov 16

Spaghetti Bolognese

Cafe Berlin

Dec 14

Dumplings



Year 7 entry to Selective High Schools in 2020

Applications for Year 7 entry to selective high schools in 2020 must be made online between 9 October 2018 and 12 November 2018.

Late applications will not be accepted.

Parents must apply online at:

<https://education.nsw.gov.au/public-schools/selective-high-schools-and-opportunity-classes/year-7>

All applicants are required to sit the Selective High School Placement Test to be held on Thursday 14 March 2019.

Information about applying for Year 7 entry to selective high schools in 2020 can be accessed on the NSW Department of Education's Selective high schools and opportunity classes website.

Key dates:

9/10/18 - Application for entry in 2020 opens online

12/11/18 - Application for entry in 2020 closes

7/12/18 - Principals provide school assessment scores for entry in 2020

28/2/19 - Test authority letter is sent to parents for entry in 2020

14/3/19 - Selective High School Placement Test held for entry in 2020

28/3/19 - Illness/misadventure requests due for entry in 2020

26/4/19 - Last day to change selective high school choices for entry in 2020

5/7/19 - Placement outcomes sent overnight for entry in 2020

23/7/19 - Appeals sent to primary principals for entry in 2020

30/7/19 - Principals send appeals to the Unit for entry in 2020

Oct 19 - Appeal outcomes are sent to parents for entry in 2020

18/12/19 - Applicants with offers for 2020 entry are removed from reserve lists unless the offer is declined

...NEXT TERM:

'ART CLUB'!

Tuesdays: 3-5pm

\$34 per class from 23/10/18

This class is for kids in years 3-6, who especially LOVE to draw!

A safe, fun & nurturing place for kids to hang out
and gain creative confidence.

Like to try a class out? No worries!!...
...casual classes can be arranged at \$35 each

MATERIALS & SNACKS
are provided at all classes



Where? **BALMAIN PUBLIC SCHOOL.**

Facebook.com/youngatartsydney

YOUNG AT

ART

To make a booking or for more details:
please email **Sally** at
youngatartsydney@outlook.com



PARENTS AND TEENS relationships and mental health

Do you have a teenager between 11 and 17 years old?

Help us understand how family relationships influence teen mental health

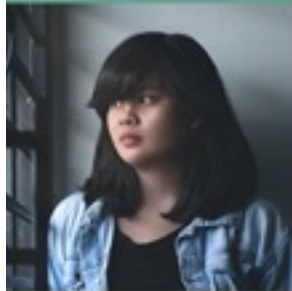
anxiety



raising teens



behaviour



relationships



mental health

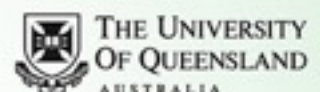


Complete a brief anonymous survey online at:

<https://exp.psy.uq.edu.au/parentingteens/project/mentalhealth>



Chance to **WIN \$100** gift voucher



BALMAIN PUBLIC SCHOOL

KIDS AT THE ART HOUSE

MONDAY 3 - 5 PM



Join the Kids At The
ARThouse this term
for lots of CREATIVE
FUN and ART making!
ALL Students K - 6

Contact Sabina
m: 0403768282

sabina@kidsattheart house.com