



PIGEON POST

Learn ~ Live ~ Lead

FEBRUARY

- Fri 2 ~ Years 3-6
Swimming Carnival
- Mon 5 ~ Kindergarten
start big school!
- Wed 7 ~ P&C Meeting
- Fri 9 ~ Welcome
Breakfast ~ 8am
- Fri 9 ~ FOOTSTEPS ~
Dance program ~ 10
weeks
- Mon 19 ~ Parent
Information Evening in
Hall:
 - 6-6:45 - Kindy
 - 7-7:45 - S3
- Tue 20 ~ Parent
Information Evening in
Hall:
 - 6-6:45 - S1
 - 7-7:45 - S2

MARCH

- Wed 7 P&C Meeting
- Fri 9 ~ P&C Welcome
Evening ~ 7pm
- Tues 27 & Wed 28 ~
School Photos



2018 & Balmain is back in business...

Welcome back...Happy New Year to all! I hope you've had a relaxing break and feeling ready to go! I know we all are, here at Balmain!

A warm welcome...to our latest family members - both students (and families) and new staff. You've joined a fabulous community!

Farewell to Ms May Ellwood...

who has decided it's time for a change and new challenge in 2018 - May is working at Five Dock PS this year - We wish her all the very best!

See you around Balmain!



Maria Lambos ~ Principal



STAFF - 2018

CLASSES

Early Stage One:

(Left to Right)

KC - Ms Amelia Cooper

KD - Ms Ariana Davis - rel. AP

KP - Ms Sophie Parsons

Stage One:

(Left to Right)

1/2C - Ms Camila Morris

1/2G - Ms Lauren Goodridge

1/2M - Ms Belinda Mikhail Gogos (Ms MG) - AP

1/2C - Ms Megan Sweeney

Stage Two:

(Left to Right)

3/4F - Ms Nancy Ferguson

3/4K - Ms Brigit Karstrom

3/4T - Ms Sharlene Tavia

Stage Three:

(Left to Right)

5/6C - Ms Cara-lee Weaver

5/6S - Ms Jennifer Stanley - Stage Coordinator

5/6Y - Ms Annabel Yau

5/6L OC - Ms Lynda Lovett - AP

5/6W OC - Ms Sarah Weston



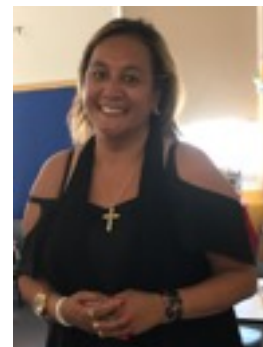
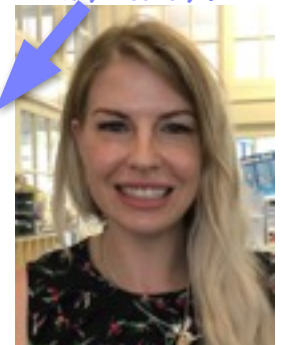
Ms Margy Whelan - Librarian & Reading Recovery teacher



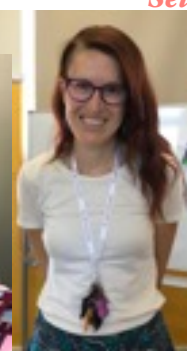
Office - Michelle (SAO), Angela (SAO) & Jenni (SAM)

Ms Jana Smith - Art teacher & EAL/D (English as an Additional Language/Dialect) - M, T, W, F

Ms Jo Edwards - AP/QTSS (Quality Teaching Successful Students)/IL (Instructional Leader) - M, (alt. T), W



Ms Martha-Jean Hynes, who was appointed to BPS at the end of last year, will be working at the High Performance Unit in 2018 (OC/Selective)



(Left to Right):

Ms (Dr) Pauline Jensen - Learning & Support - T, W, alt. Th

Ms Penny Biggins - Music Specialist - M-Th

Ms Ally (Alicia) Kozianski - SLSO School Learning Support Officer

Mrs Maria Lambos - Principal





2018 Kindy parents/carers
are warmly invited to join
us for **Morning Tea**
after Kindy drop off
Monday **5th February** @
9:30
in the **Library**

P&C (Parents & Citizens) Meeting
Wed 7th Feb @ 7:00pm
in the Staffroom



COME & ENJOY A BBQ BREAKFAST, COFFEE, JUICE & CROISSANTS
JUST A GOLD COIN DONATION [PER ITEM]

If you would like to volunteer or have any enquiries, please contact Cliff or Anne via email: welcomebrekkie@gmail.com

Multi-age or composite classes

2014-2017

Hattie's (2003) synthesis of research states that teacher quality is the greatest influence on student achievement rather than class composition and numbers.

Multi-age classes are made up of students drawn from different year levels. They may be established because of the uneven pattern of enrolment in the school, because of the small size of the school or where it is considered that mixing students of different ages is academically and socially advantageous.

These multi-age classes are often designed to match the organisation of the syllabus, which is based on 'stages' running over two years.

Research about multi-age classes

Three findings stand out in the research:

Class organisation "...will not determine either educational advantage or disadvantage..."
(NSW DET 1997).

- The most important factors in determining student success are the quality of the teacher and his or her teaching.
- Multi-age classes may benefit students both socially and emotionally.

The number of multi-age classes and children in these classes in each NSW public primary and infants school can be seen in the data below. It does not include students in support classes or schools without multi-age classes.

NSW students are performing at a high level

NSW consistently performs above the national average in NAPLAN testing.

In 2016:

- the proportion of NSW students performing at or above the national minimum standard for Reading and Numeracy was above the national average in all four testing years.
- NSW is mostly ranked in the top three jurisdictions, along with ACT and Victoria, on the proportion of students at or above minimum standard and the proportion of students achieving results in the highest band for NAPLAN performance.

Composites – Stages not Ages

At the beginning of a new school year, many parents might suddenly find their child in a composite class. Naturally, questions arise: For the older group - will my child be held back? For the younger group - will my child be able to keep up?

In all NSW schools, including Balmain Public School, classes are taught according to **Stages**, regardless of whether they are a stage/composite class, or not.

Early Stage 1: Kindergarten

Stage 1: Years 1-2

Stage 2: Years 3-4

Stage 3: Years 5-6

Teachers within each Stage work together to ensure that every child participates in a learning program that is both challenging and supportive, regardless of their age, individual needs or skills.

Background

Classes that are made up of children of different year levels have traditionally been called *composite* classes. In recent times, these classes have also been labelled **stage**-based classes, multi-aged or family classes.

There are two reasons why these classes are formed:

- Educational – where classes are formed on the basis of educational rationale as they are seen to have educational benefit for the student
- Administrative – this is where there is an uneven enrolment in school years and classes need to be formed across a number of school years. This occurs in most primary schools and especially in smaller primary schools

Classes are formed following either of the above criteria or a combination of these criteria.

Composite classes have been the source of much controversy over the years, with parents often believing that their child is being disadvantaged in some way by being in one. The key to understanding composites is realising that growth is determined in stages and not magically by ages.

Some points worth noting are:

- **Children have always been in multi-aged classes anyway.** The ages of kindergarten students range from four and nine months to six and six months, an 18 month difference! Some children start school barely toilet trained where others are quite mature and are already reading at an advanced level. Same class but different stages.
- **Older students are not held back in composite classes.** In teaching we accept that different children learn at different rates. Separate programs are often used in many curriculum areas for the different groups of students according to their level of development. There are also some joint activities such as in art and drama. Expectations for each child differ and will be measured against the ability of the child. This tends to be focused on more so in a composite class situation.
- **Composite classes can provide significant benefits to both the younger and older students in the class.** Older students can benefit from helping younger students in co-operative learning situations. The younger students have the opportunity of enhanced learning experiences where they are ready for it. Through multi-age learning groups, students begin to see themselves and others more realistically. They come to appreciate the diversity of talents, skills, and abilities of their classmates. This leads students to use more appropriate and varied criteria than just age as a basis for building relationships and learning from one another. **The multi-age learning groups provide additional opportunities for children to develop a wider range of social skills.**

- **Children in composite classes do no better or worse academically than their peers in straight grade class, but that, socially, their development is enhanced.** They are more confident, can operate better as part of a group, are more assertive, become more independent learners and better problem- solvers. They also make friends outside of their standard age-groups.
- **The greatest impact on student learning is the quality of the teacher not class composition.** Teachers recognise that children will be at different levels within the same class. They are able to cater for this through differentiation of the curriculum. Differentiating the curriculum means that **every** child will be catered for. *The class then becomes outcomes based rather than competition based – this method of teaching also applies to straight classes.*

Some interesting reading

Link to Hattie's research: https://research.acer.edu.au/cgi/viewcontent.cgi?article=1003&context=research_conference_2003

Article: 'Many parents dislike composite classes but the evidence does not support their anxiety' (SMH 20/4/15)

<http://www.smh.com.au/national/education/many-parents-dislike-composite-classes-but-the-evidence-does-not-support-their-anxiety-20150413-1mk4g9.html>

Quality Teaching at Balmain Public School

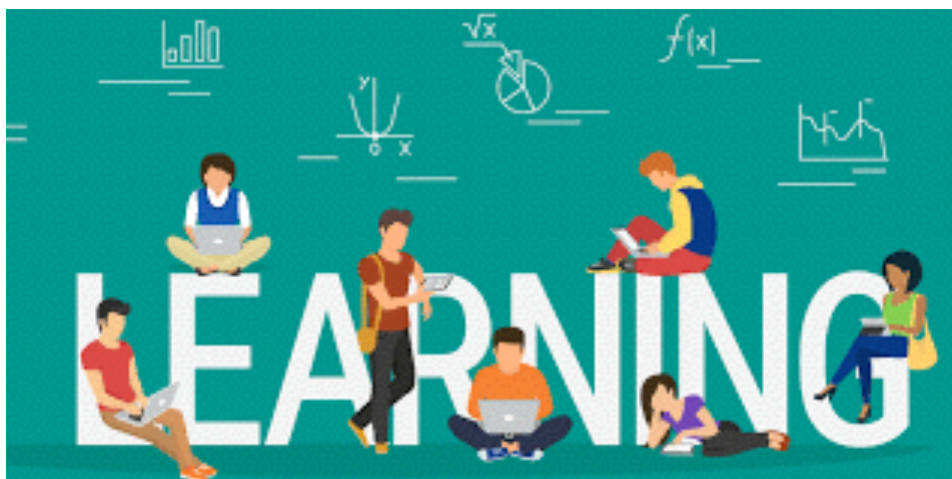
The Quality Teaching, Successful Students (QTSS) initiative provides an additional staffing resource allocation to improve the quality of teaching in all NSW public schools with primary students enrolled.

The Quality Teaching, Successful Students (QTSS) initiative – as part of Local Schools, Local Decisions – was introduced into ensures all primary students benefit from high quality teaching and learning practices that best meet their needs. QTSS provides time to:

- mentor and coach other teachers
- observe teachers in their classrooms and demonstrate effective teaching strategies
- monitor student performance data across the school and ensure teachers are focused on areas of need
- help schools become thriving learning communities.

In 2018, Ms Jo Edwards, one of our Assistant Principals, will be working with each stage to establish collaborative practices in the school, allowing teachers to work together to develop learning and assessment tasks, as well as to identify areas of need for each individual student.

When organising classes, staff consider the academic, social and emotional needs of each student to facilitate placement in a classroom environment that will help them to develop confidently in their learning.





International Year of the Reef @ BPS...

The International Year of the Reef 2018 is a worldwide campaign to raise awareness about the value and importance of coral reefs and threats to their sustainability, and to motivate people to take action to protect them. All individuals, corporations, schools, governments, and organisations are welcome and actively encouraged to participate in IYOR 2018.

At Balmain PS, our class names are reef-related...

K Crabs - Ms Amelia Cooper

K Dugongs - Ms Ariana Davis

K Pufferfish - Ms Sophie Parsons

1/2 Clams - Ms Camila Morris

1/2 Galapagos - Ms Lauren Goodridge

1/2 Megalodon - Ms Belinda Mikhail Gogos

1/2 Seahorse - Ms Megan Sweeney

3/4 Flameback - Ms Nancy Ferguson

3/4 Krill - Ms Brigit Karstrom

3/4 Turtles - Ms Sharlene Tauia

5/6 Coelacanth (seel-a-canth) - Ms Cara-lee Weaver

5/6 Lasseter's Reef (OC) - Ms Lynda Lovett

5/6 Spoggiá (spogg-yah) - Ms Jennifer Stanley

5/6 Wahoo (OC) - Ms Sarah Weston

5/6 Yabby - Ms Annabel Yau

2018 House Captains & Vice Captains

CONGRATULATIONS TO THE FOLLOWING PEOPLE:

Blue Gum

(C) Jeremy Prineas
(V) Aiden Webb
(C) Anahita Dubey
(V) Alexandra Templer-Feeney

Grevillea

(C) Dominic Wee
(V) Jack Batchelor
(C) Thea Green
(V) Savannah Hazlewood

Lilly Pilly

(C) Max Kantor
(V) Pearce Tyson
(C) Matisse Liu
(V) Grace Shen

Wattle

(C) Harry McLean
(v) Henry Daniels
(C) Bella Talib
(v) Hannah Banks



BPS CANTEEN



Balmain P&C canteen runs **every Friday**, except the first and last weeks of term.

Orders for our value meal are placed through

www.flexischools.com.au

by 9am Thursday of that week

You can order for the whole term and not have to worry about missing cut-off times. Children are allowed to make purchases of snacks over the counter during lunch break.



REFUND POLICY

Simply log into your account to make cancellations or changes, any time up until the cut-off time. If you need to cancel after the deadline, please call or text MOB: 0404 000 001 Monies will be refunded back into your Flexischools account.

VALUE MEAL

Choose between the hot weekly special or from the selection of sandwiches, toasties or sushi.

Also included is a snack of your choice: popcorn or quelch

DRINK UP!

Add a drink for only an additional \$1.50!

Your choice of:
Milk
Nudie Apple Juice
Nudie Orange Juice

VOLUNTEERING

The canteen is 100% volunteer run – three parents are required to pack lunch orders, make toasties and serve the children on the day. There are two dedicated parents who manage the roster and fill the orders, stock and prep the canteen etc. Because of this, the canteen generates a significant slice of Balmain Public School's fundraising capital.

BPS is a big believer in fostering community relationships – and offering your time on Fridays is the perfect way to build on new and current relationships. Volunteering at the canteen is a hugely beneficial way to assist the school and your children.

To volunteer, send an email to Karen Harvey on canteen2017@gmail.com

CONTACT

If you have any questions or issues with ordering, please contact: van.hl.allen@gmail.com

BPS CANTEEN



www.flexischools.com.au

DRINK UP!
add \$1.50



Milk
Nudie Juice
- Apple or
- Orange

\$6.50
MEALS



Meal



Snack

DAILY SNACKS

\$1.20

Air-popped popcorn
Fruit salad cups
(in juice)

Rice wheels
(salt & vinegar)

\$2.50

Diced Peach cups
(in coconut water)

COLD LUNCHES

**Fresh Sandwiches on
WHOLEMEAL bread**

Ham & Cheese
Ham & Tomato
Ham
Cheese
Cheese & Tomato

SUSHI

Teriyaki chicken & cucumber
Tuna (GF)
Avocado & cucumber (GF)

*GF denotes Gluten Free

**FROZEN
SNACKS (ALL GF)**

Quelches - 60c

apple, orange, tropical
mango or blackcurrant

Juicies - \$1.20

tropical or wildberry

Frozen Yogurt - \$2.00

watermelon & mango
raspberry & coconut

HOT LUNCHES

**Fresh Toasties on
WHOLEMEAL bread**

Ham & Cheese
Ham & Tomato
Ham
Cheese
Cheese & Tomato
Baked Beans*
Spaghetti*

*Rotate fortnightly

Weekly rotation

Pork Dumplings
Stewed Beef & Rice
Mince Pork & Rice
Butter chicken & Rice (GF)
Penne Napoletana
Pasta & Meatballs



Empowering young people towards their greatest success through music.

2018 **BAND & STRINGS** MEMBERSHIP APPLICATIONS ARE OPEN!

We are pleased to introduce **Directions In Music** to the students, staff, and families of Balmain Public School! **Directions In Music** will be managing the logistical, administrative, and artistic elements of the BPS Band Program in 2018. To ensure we get off to a great start, we are now taking enrolments for **brand new students** who would like to join the Band or Strings program at Balmain Public School.

How do we get involved?

Visit www.directionsinmusic.com.au to find out more about the instrumental music program & register your interest by clicking Enrol Here. Then click either School Band or School Strings.

When are the rehearsals and lessons?

- Band Rehearsals: Beethoven Band for our beginner students - Thursday at 7.45am
- Bach Band for our advanced students are Wednesday 7.45am
- String Rehearsals: Wednesdays Break A
- Private lessons: available during school
- All ensemble members are expected to attend the scheduled rehearsals, lessons & performances throughout the year.

What does membership cost?

- Band or String ensemble membership is a monthly cost of \$45, across February to December, which includes all rehearsals and concert performances
- Students will also need to book a weekly private lesson with one of our instrumental tutors at school, or make arrangements outside of school. Private lessons are usually \$40 for each 30 minute tutorial
- All students will receive a Beginner Muso Kit (including music book, practice diary & bag) at a one-time cost of \$35, at the time of enrolment

How do I get an instrument?

All band and strings members will need an instrument for rehearsals, lessons, and practice. You can hire, or purchase an instrument from Directions in Music, or source your own. It is ideal for young students to begin playing on a good quality instrument brand such as Jupiter, Yamaha, Enrico, or Gliga.



Who would
have
thought
that 2
buddies in
2017 - Emily
B in Y6 and
Lauren B in
Kindy, would
meet on top
of Mt
Kosciuszko
during the
holidays?



ARE YOU READY TO BOOGIE
THE NIGHT AWAY?

BPS Parent Welcome Drinks

\$45PP INCLUDES CANAPES AND 2 DRINKS
THEME: COLOURFUL DISCO!

FRIDAY 9 MARCH | 7PM
BUY TICKETS ON
WWW.FLEXISCHOOLS.COM.AU

AFTER SCHOOL ART CLASSES

'ART CLUB!'

Tuesdays: 3-5pm

from 30/1/18

This class is for kids who especially LOVE to draw!

\$34 per class

Years
3-6

new
class

'ART NINJAS!'

Thursdays: 3-4.30pm

from 1/2/18

A more varied program, to include crafts

\$30 per class

years
K-6

An extension until 5pm is possible for this class, please ask for details.



MATERIALS & SNACKS

are provided at all classes.

Like to try a class out? No worries!!...
...casual classes can be arranged at \$35 each



AT BALMAIN PUBLIC SCHOOL

YOUNGATARTSYDNEY.COM

YOUNG AT

ART

For more details, please email **Sally** at
youngatartsydney@outlook.com

SkoolBag

Don't forget to download our school's SkoolBag app to ensure that you are kept in the loop on:

- * School newsletters
- * Cancellations
- * Notices
- * Reminders
- * Events
- * ...and more!

INSTALLATION INSTRUCTIONS

Just search for our school's name in the App Store on your phone and download our app!

TOP NOTE MUSIC

9807 1272 | 0404 871 272



In Term 1, 2018, we will continue to provide electronic keyboard organ / piano lessons at your school.

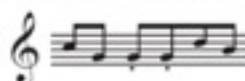
Students would be taught by Mrs Chiara who has been teaching group keyboard lessons for over 20 years for Top Note Music School.

Tuition is \$20.00 for a 45minute lesson per week. Family discounts for siblings are available.

To express your interest in providing this program, fill in the form, and return to your school or email at topnotemusicschool@gmail.com by Friday 9th February, 2018.

----- cut and return this part -----

MUSIC LESSONS



Yes, I'm interested in my child in learning to play the piano/keyboard with Top Note Music School.

Child's Name Class.....
School.....

We have our own instrument Piano ☐ Elec. Organ/Keyboard ☐ None ☐

Parental Approval..... ☎ Contact Phone No.....

Hey Dads...



Are you a **Stay-at-Home Father** or Father who is the **primary carer** for your child/children?

OR

Are you a **Working Father**, working outside the home with a child or children at home?

We would like to know more about you and your use of social media and how this affects social connectedness and depression.

To access the survey, please copy the link below:

https://monash.az1.qualtrics.com/jfe/form/SV_80J8O6jbc36tBuR

Or use your QR app to scan this QR code:



Should you choose to complete the survey and enter your email address at the end of the survey, you will **go into a draw for a chance to win one (1) of two (2) \$50 e-gift cards from giftpay.com.au**

