

# PIGEON POST

Learn ~ Live ~ Lead

## MAY

- Tues 8 ~ ICAS Digital Technologies ~ 8am
- Fri 11 ~ 8am Mothers' Day Breakfast 8am
- Fri 11 ~ 9am Cross Country ~ 8 years +
- Tues 15 ~ NAPLAN ~ Writing
- Wed 16 ~ NAPLAN ~ Reading
- Thurs 17 ~ NAPLAN ~ Language Conventions
- Fri 18 ~ 'Walk Safely to School' Day
- Tues 22 ~ NAPLAN ~ Numeracy
- Wed 23 ~ NAPLAN ~ Catch-up day for missed tests
- Tues 29 ~ ICAS Science ~ 7:30am



## I'm baaaaaack!

Hello everyone, my name is Mr Baumann. I may be a familiar face to some of you, or a brand new face to others. This year I'll be teaching 1/2 Blue Dragon and I couldn't be more excited.

I grew up on the Central Coast and graduated from Newcastle University in 2013. I moved to Sydney the following year to start work here at BPS. I took last year off to partake in new and exciting adventures. I am eager to bring back into the classroom everything that I learnt last year and to be back here in the Balmain community.

I like to keep myself fit and active by training in CrossFit five mornings a week, as well as playing soccer on the weekend as a goal keeper for Five Dock FC. I love dumplings and am passionate about maths, science, sport and technology.

I am looking forward to a wonderful year ahead, so please feel free to come say 'hi'.

*Sean Baumann*

BALMAIN PUBLIC SCHOOL P&C

# MOTHER'S DAY BREAKFAST

8AM - 9AM, FRIDAY 11TH MAY



ENJOY BACON 'N' EGG ROLLS, MUFFINS, CROISSANTS, PASTRIES, COFFEE, TEA, FRUIT & JUICE  
JUST A GOLD COIN DONATION [PER ITEM]; DADS, KIDS & EXTENDED FAMILY ARE WELCOME, TOO !!

Thanks to *Coutche Street Bakery* for Supporting this P&C Event.

BPS P&C FUNDRAISER  
**ART SHOW**  
BLUE PLANET

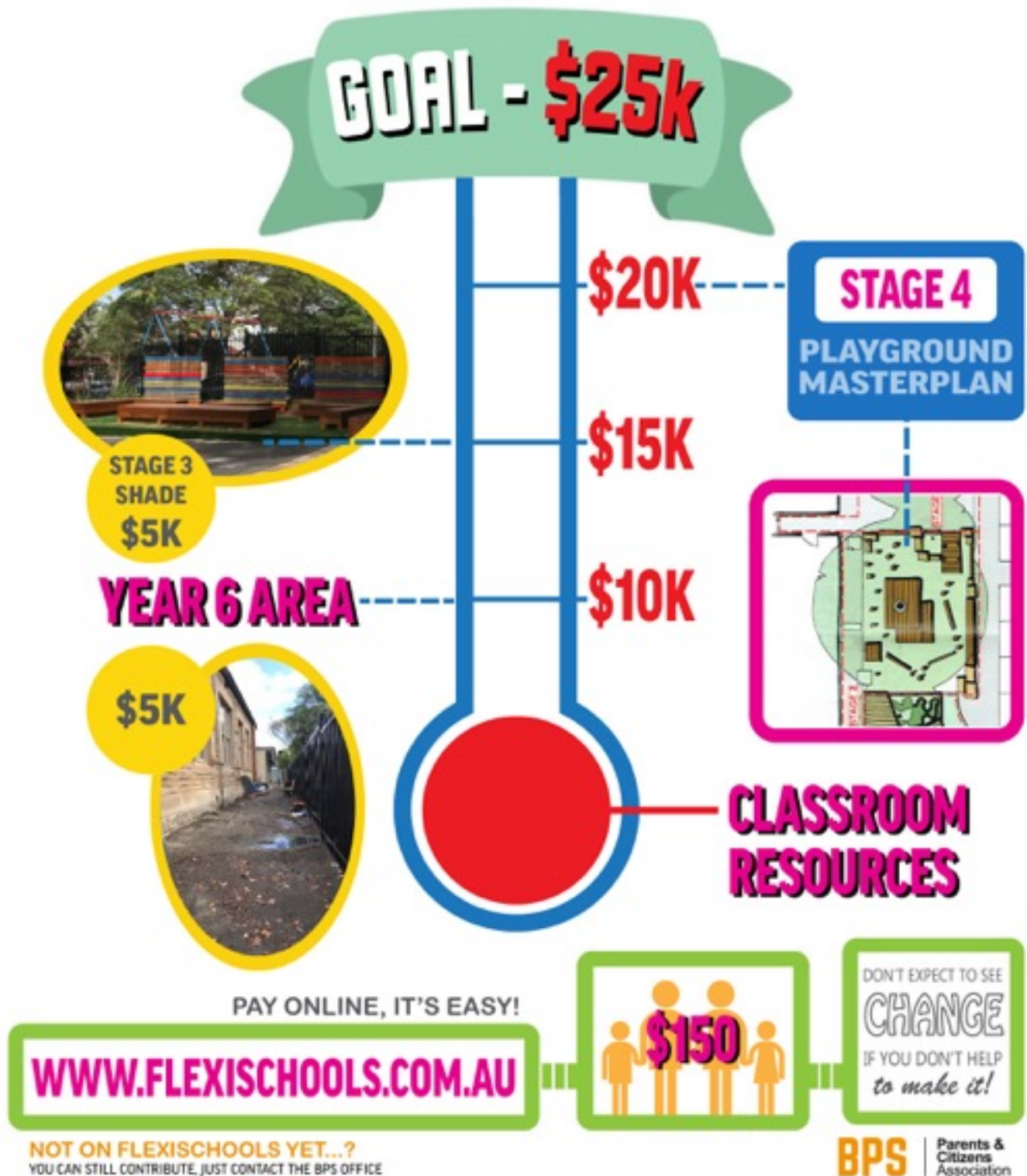
FRIDAY 14<sup>th</sup> SEPT 7PM  
PARENT'S EVENING

SATURDAY 15<sup>th</sup> SEPT 9AM-1PM  
FAMILY DAY

Save  
The  
Date



# 2018 BPS P&C CONTRIBUTION



Dear Parents,

We highlight the 2018 P&C Contribution is now live on <http://www.flexischools.com.au>.

The recommended amount is \$150 per family, however, this is merely a suggestion and many use this avenue to contribute to our school.

As the president, I take pride in our P&C returning all these funds directly into the education of all kids at Balmain Public School.

We ask for this contribution in Term Two, in order to spread the financial load across the year for all families.

As a P&C we continue to aspire to have a school whose educational outcomes are enriched and enhanced by the proactive involvement of Parents.

Rob Taubman~P&C President



# LEST WE FORGET



So very proud of our students, who donned their school uniform during the school holidays, to attend the ANZAC Day dawn service at Loyalty Square...

Many of our community and students were in attendance for a very moving commemoration.

*Lest we forget...*



It's definitely not easy getting up on a stage and speaking in front of the entire school, especially for a solemn occasion such as our ANZAC Day Commemorative Assembly.

Our leaders all contributed and did an amazing job! It was done with such confidence by all involved...

**So proud!**





# THE BALMAIN WAY ...

We are a community of:

**SAFE, RESPECTFUL** and **RESPONSIBLE** learners.

**POSITIVE BEHAVIOUR FOR LEARNING** or **PB4L**, was introduced to the entire school at morning lines on Tuesday.

Over the next few weeks, students will be learning about how to be **safe**, **respectful** and **responsible** learners in all areas of our school.

**POSITIVE PETE** cards will be handed out to students when positive behaviours are displayed and placed in a special box at the office.

Each Wednesday at morning lines, a **Positive Pete** will be drawn and the lucky student will receive a prize!

## **SAFE**

Listen and follow instructions

Be in the right place at the right time

Keep hands and feet to yourself

## **RESPECTFUL**

Show pride in your school

Allow others and yourself to learn

Use your best manners at all times

## **RESPONSIBLE**

Accept opportunities and challenges

Be accountable for your actions and choices

Be punctual and prepared



# WE MADE IT!

I'm a very proud  
mum of two!

On Friday 27  
April, our very  
own **Ms Nancy  
Ferguson**  
graduated from  
the University of  
Sydney, attaining  
a **Bachelor of  
Education  
Primary** degree.

**Congratulations!!**



My son, Giorgio, graduated  
straight afterwards, attaining  
both Bachelor of Education  
(Secondary: Humanities and  
Social Sciences) & Bachelor of  
Arts degrees.

He has been appointed to  
Endeavour Sports High as an  
English teacher.

# CONGRATS!

# Reminder: ICAS Digital Technologies Tuesday 8 May @ 8am

If you have registered your child for the ICAS Digital Technologies test, please remember to bring your child to school next Tuesday 8 May at 8am.

The test will take place in the 5/6S and 5/6Y classrooms and will begin at **8.05am SHARP**.

The 5/6Y and 5/6S classrooms on the top floor in the main building, at the opposite end of the building to the school reception. Miss Stanley and Miss Tavia will be supervising the tests.

## ICAS Dates:

Tuesday, 8 May 2018, 8am - Digital Technologies

Tuesday, 29 May 2018, 7.30am - Science

Wednesday, 13 June 2018, 7.30am - Spelling

Thursday, 14 June 2018, 8am - Writing

Tuesday, 31 July 2018, 7.30am - English

Tuesday, 14 August 2018, 7.30am - Mathematics

Regards,  
Miss Stanley - ICAS Coordinator



Active Kids are Healthy Kids

Balmain Public School is participating in 'Walk Safely to School Day' which occurs on Friday 18<sup>th</sup> May.

Now in its 18th year, national 'Walk Safely to School Day' is an annual community event when all Primary school children will be encouraged to walk and commute safely to school. It is seeking to promote road safety, encourage daily physical exercise and foster the many benefits for the environment that walking provides such as less traffic congestion and air pollution.

Balmain Public School encourages you on this day and when possible to enjoy an early morning walk and take advantage of the many physical, safety and environmental benefits that walking to school provides.

Ms Megan Sweeney - Coordinator

# Premier's Spelling Bee



THIS TERM, STUDENTS FROM YEARS 3 - 6 WILL PARTICIPATE IN THE DEPARTMENT OF EDUCATION'S 'PREMIER'S SPELLING BEE'.

STUDENTS WILL INITIALLY TAKE PART IN A CLASS SPELLING BEE, WHERE TWO FINALISTS WILL BE CHOSEN TO REPRESENT EACH CLASS. YEAR 3 AND YEAR 4 CLASS FINALISTS (JUNIORS), AS WELL AS YEAR 5 AND YEAR 6 CLASS FINALISTS (SENIORS), WILL COMPETE TO SECURE A PLACE FOR REGIONALS. THERE ARE 2 PLACES AVAILABLE TO JUNIOR STUDENTS AND 2 PLACES AVAILABLE TO SENIOR STUDENTS. JUNIOR AND SENIOR SCHOOL COMPETITIONS WILL BE HELD IN WEEK 9 OF THIS TERM. SPELLING BEE REGIONALS WILL TAKE PLACE IN SEPTEMBER AND THE STATE FINALS WILL TAKE PLACE IN NOVEMBER.

THE PREMIER'S SPELLING BEE WAS INTRODUCED IN 2004 AS A FUN AND EDUCATIONAL WAY FOR PRIMARY SCHOOL STUDENTS TO ENGAGE IN SPELLING. THE PROGRAM INCLUDES ACTIVITIES TO ENCOURAGE ALL STUDENTS TO IMPROVE THEIR VOCABULARY AND SPELLING, AND TO PROMOTE LITERACY SKILLS IN COMBINATION WITH THE ENGLISH K-6 SYLLABUS.

GOOD LUCK AND HAPPY SPELLING!

SARAH WESTON AND MEGAN SWEENEY  
ORGANISING TEACHERS



# A Letter to the Deputy Secretary...

Dear Honourable Deputy Secretary Murat Dizdar,

My name is Paul Braoudakis. I am in Year 6 and a Senator at Balmain Public School, Sydney, and I have written to you today requesting the NSW Department of Education's financial assistance in a project to redesign the Stage 3 classrooms into flexible learning spaces with equal equity for all members of the school. We define flexible learning spaces as modern learning environments in which students can thrive in a more collaborative, self-organised learning environment.

A flexible learning space consists of furniture that has multiple purposes, such as a table might have a whiteboard as its tabletop and storage on its sides as well as seating. It usually consists of multiple 'living' rooms, groups of tables that seat between four to six, separate from the standard, greying tables that seat two and are not very space efficient. The space may also consist of comfortable floor furniture such as chair pads and compact chairs that can be flattened out and put underneath a table.

Flexible Learning Spaces are becoming ever popular in our rapidly growing state, with corporate businesses such as the Commonwealth Bank employing these strategies, encouraging more flexibility in working hours. Over in the United States of America, the Albemarle County Public Schools have had all their classrooms completely redone as flexible learning spaces, with teachers noting that their students' grades have improved, are much happier and more engaged with their learning, and are eager to participate in class discussions more often. These statistics were recorded and published by Edutopia.

At Balmain Public School, we are among five primary schools in the Balmain Peninsula, each nearing full capacity of students, with serious space problems with compact boundaries, requiring the need of flexible learning spaces which maximise space efficiency as much as possible. We have trialled this in our Early Stage 1 and Stage 1 classrooms, which has proved to be a great success for teachers and students alike. With the Department of Education's financial aid, Balmain Public School has endless possibilities for learning environments in which students thrive. The overwhelming amount of evidence to support claims for more and more flexible, easily adaptable classrooms is paramount to a collaborative classroom environment. These environments could easily be integrated into, with little to no disruption to learning. That is why I request the Department of Education's help in moving Balmain Public School into an innovative, modern future. The current Resource Allocation Model and Local Schools, Local Decisions reforms and their objectives perfectly suit the idea of a flexible learning space to encourage students to thrive in a committed school environment.

Being in a position of student leadership, I realise that my school is paramount to the future of everyone who attends it. It is not just education that matters, but also the environment that we are taught in. Some of the current classrooms at Balmain Public School are small for the capacity they hold, and that is why a flexible learning space will solve the problems our classrooms are faced with. Companies such as Furnware have provided schools with flexible learning space furniture and layout since their founding, and have a generous amount of experience with schools who have implemented such spaces, such as St Andrews Catholic School in Ferny Grove, Queensland. They would be readily equipped to handle the situation at Balmain PS, if the Department will aid us.

I look forward, with excitement and passion, to hear your considerations on my idea, and the future of Balmain Public School.

*Yours Sincerely,  
Paul Braoudakis*

# A Letter to a Year 6 student...



Education  
Public Schools

Mr Paul Braoudakis  
Year 6 Student  
Balmain Public School  
1 Eaton Street  
BALMAIN NSW 2041

DOC18/332529

Dear Paul

Thank you for your letter that your teacher, Ms Lynda Lovett sent on to me, requesting financial assistance to redesign the Stage 3 classrooms at Balmain Public School.

I am responsible for over 2,200 public schools across NSW and as you would appreciate I regularly receive requests from students and staff for financial support. In response to these requests I explain that Resource Allocation Model and Local Schools, Local Decisions gives principals and their school communities a greater say over how they allocate and use their available resources to best meet the needs of their students.

However, I am most impressed with the research you have undertaken to support your mathematics assignment and also that you have considered ways to improve the learning environment with a proposal to maximise space efficiency. The Balmain Public School flexible learning place initiative could be a useful exemplar for other schools considering such a project.

For this reason, I am willing to match the amount of \$5,000 allocated by Balmain Public School's Parents and Citizens Association. This payment will be made through my office directly to your school. Please advise me when your project for Balmain Public School has been completed as I now share your enthusiasm for your plans.

I wish you every success for your project and for your final year at Balmain Public School.

Yours sincerely

Murat Dizdar PSM  
Deputy Secretary  
School Operations and Performance  
30 April 2018

cc Ms Maria Lambos, Principal, Balmain Public School



**Congratulations to Paul for showing such initiative!**

**We look forward to seeing what Paul and Stage 3 will be able to achieve.**

**Mr Murat Dizdar is also looking forward to the finished product and intends on visiting Balmain Public School!**



# Complete Clean Award...

...goes to **Ms Lynda Lovett**, who spoke (or ranted and raved) to all the Stage 3 students about the importance of only using the toilets for the right (or seemingly obvious) reasons! **Congratulations!**

**Thank you to our families who are also reiterating this important message at home, too!**



**Level 1 30A George St, Burwood 2134**  
Office: (02) 9745 1170

## CHESS!!

Learn to be a chess champion! Coaching for students at Balmain Public School is held on Thursdays from 1:20pm to 2:00pm, starting on 3 May 2018.

Learning and playing chess helps children develop their logical thinking and problem solving skills, improves their concentration and focus, while also being a great source of enjoyment. Activities include group lessons on a demonstration chess board or interactive whiteboard, puzzle solving and fun practice games.

Students earn merit awards by making checkmates, or by displaying skills and positive qualities, which all good chess players strive to develop.

If your child is interested in taking part, you can collect an enrolment form from the school office, or email [enrol@sydneyacademyofchess.com.au](mailto:enrol@sydneyacademyofchess.com.au) for a copy. For all enquiries, please contact Sydney Academy of Chess on (02) 9745 1170.

...JUIJSU



AT THE

PGYC...

...HIP HOP



...YOGA



...BOXING





## SPARKING YOUNG MINDS

If your child could benefit from extra support or needs extending, we can help!

# LEAP INTO LITERACY

Leap into Literacy offers creative writing and reading comprehension classes for primary school aged children. Our inspired creative approach engages children in a love of lifelong learning.

- ▶ Primary school students in Years K-6 at all levels
- ▶ FREE TRIAL CLASS and assessment
- ▶ Fun learning environment
- ▶ Small class sizes
- ▶ Qualified teachers
- ▶ Classes available after school and on Saturdays

### CONTACT US



0420 734 720



info@leapintoliteracy.com.au



www.facebook.com/leapintoliteracy.com.au

*"Leap into Literacy has helped to develop my child's confidence by giving him skills and techniques to tackle writing and comprehension assignments. I saw results and improvement in his work almost immediately."*

**Lana**



**LEAP INTO LITERACY**  
Reading, Writing, and Creativity!

[www.leapintoliteracy.com.au](http://www.leapintoliteracy.com.au)





Macquarie:  
**ADHD**  
Parent Support Group Inc.,

Supporting parents and carers of children & teens with ADHD, learning difficulties, and co-existing conditions

## ADHD Transitions - Moving up to Big School

**Dr Caroline Stevenson**

Clinical Psychologist

ADHD children usually have difficulty with transitions. One of the most significant transitions is moving up to high school. Parents struggle deciding which high school to send their ADHD child and worry about how they will manage in this new environment. In this talk Dr Stevenson will help parents consider what is important in secondary school selection and also offer strategies to make the transition as easy as possible. Caroline will also touch on the transition to tertiary study.

Dr Stevenson specialises in ADHD across the lifespan in her private practise in Frenchs Forest and is also a board member of ADHD Australia.

<b>WHEN</b>	Thu 31 May, 2018
<b>TIME</b>	7.00pm - 9.00pm (including question time and supper)
<b>VENUE</b>	Dunmore Lang College (adjacent Macquarie Uni) 130-134 Herring Road, NORTH RYDE, NSW 2113 <i>Transport: Macquarie Uni train station or Limited off-road and street parking.</i>
<b>RSVP</b>	<a href="http://www.trybooking.com/UTJZ">www.trybooking.com/UTJZ</a>
<b>COST</b>	\$5.00 online (or at the door if places available)

**ALL WELCOME**  
**Stay for supper to meet the speaker**

**ADHD Centre Helpline**

Ph: 02 9889 5977 / 0416 111 036

Email: [info@macquarieadhd.org.au](mailto:info@macquarieadhd.org.au)



# KIDS AT THE ARTHOUSE

## ENROL FOR 2018

**ENROL NOW** and join the Kids At The ARthouse every Monday 3pm - 5pm at Balmain Public School for lots of creative fun and art making. This visual arts program will enrich and inspire every student's creativity through a variety of art practises. Painting, printmaking, sculpture, drawing, mixed media and many more techniques are taught throughout the year. We supply everything including afternoon tea! All students from K-6 and from other schools welcome!

Come along, have lots of fun and unleash your creative spirit!

CONTACT: Sabina Carney

e: [sabina@kidsattheartthouse.com](mailto:sabina@kidsattheartthouse.com) m: 0403768282



### KIDS AT THE ARTHOUSE STUDENT ACHIEVEMENTS:

FIVE STUDENT FINALISTS IN THE "YOUNG ARCHIES" 2017 ART GALLERY OF NSW  
STUDENTS CHINESE NEW YEAR EXHIBITION AT THE CHINESE GARDEN OF FRIENDSHIP (DARLING HARBOUR) "DREAM" EXHIBITION - 2014, 2015 & 2016  
WINNERS: CHILDREN'S BOOK COUNCIL OF AUSTRALIA POSTER COMPETITION 2015  
FINALIST: AUSSIE ART COMPETITION 2014  
WINNER: AVANT CARDS "CALLING ALL ARTIST'S" COMPETITION 2013 & 2010  
FINALIST: AUSSIE ART COMPETITION 2013  
WINNER: SYDNEY PORT AUTHORITY POSTER COMPETITION 2012  
WINNER: SYDNEY PORT AUTHORITY PHOTOGRAPHIC COMPETITION 2011  
THE AUSTRALIAN NUMERACY AND LITERACY FOUNDATION COLLABORATIVE PROJECT 2013  
THE TAFE ULTIMO SCREEN PRINTING DEPARTMENT COLLABORATIVE PROJECT 2011

BALMAIN PUBLIC SCHOOL P&C

## MOTHER'S DAY BREAKFAST

8AM - 9AM, FRIDAY 11TH MAY

ENJOY BACON 'N' EGG ROLLS, MUFFINS, CROISSANTS, PASTRIES, COFFEE, TEA, FRUIT & JUICE  
JUST A GOLD COIN DONATION [PER ITEM]; DADS, KIDS & EXTENDED FAMILY ARE WELCOME, TOO !!

Thanks to *Couture Street Bakery* for Supporting this P&C Event.